


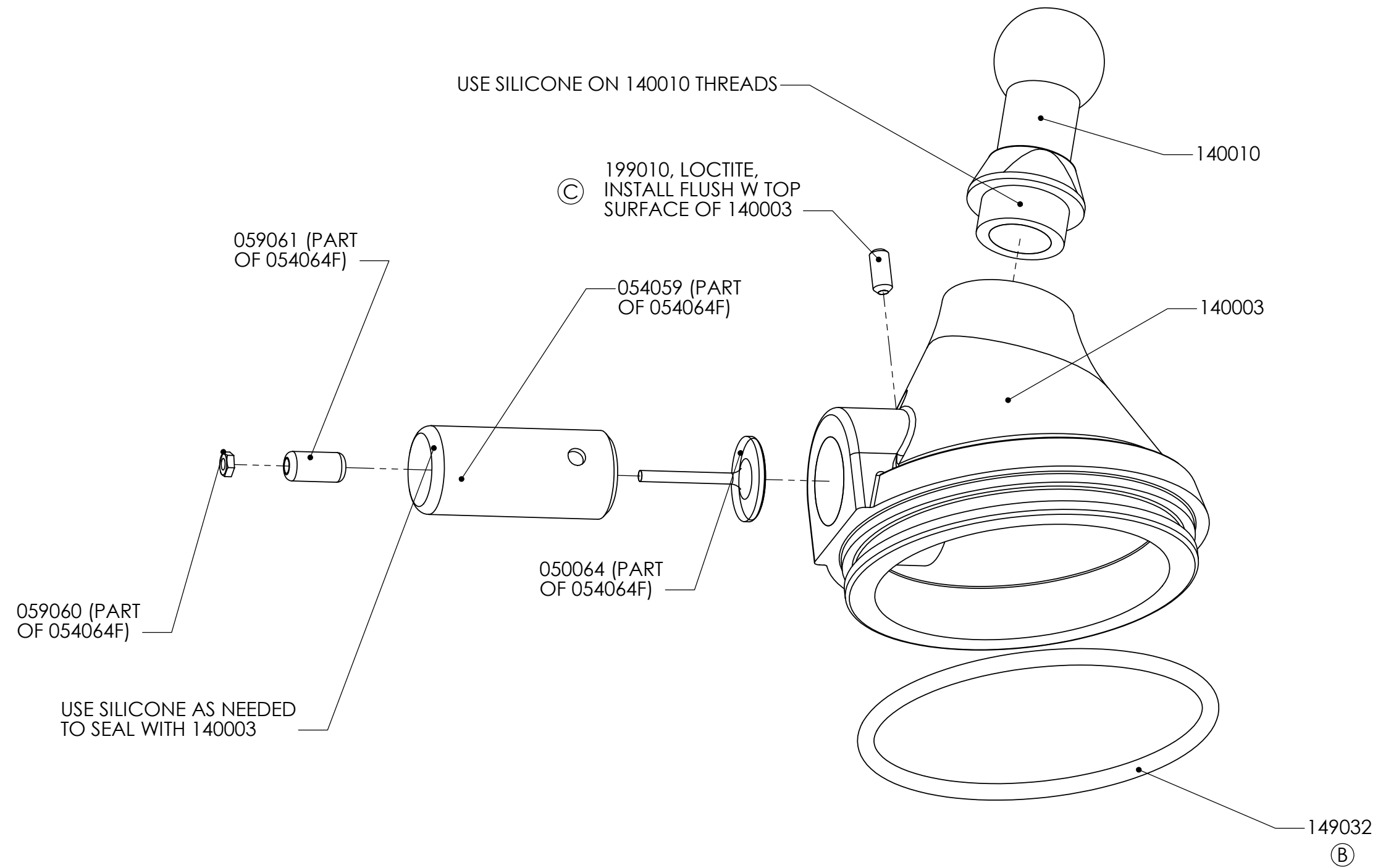
REVISIONS				
ECN	REV	DESCRIPTION	DATE	BY
1227	A	RELEASED FOR PRODUCTION	10/02	MWJ
1263	B	149032 WAS 149027. RE-FORMATTED.	04/02	D.J.C.
1296	C	141001, 149033, 199010 WERE 140001, 169010, 729064 RESPECTIVELY	07/02	MWJ
1319	D	141016 WAS 140016, ADD 149034, 149035	12/02	MWJ

P/N	Qty.	Description
Ⓒ 141001	1	Tube
140002C	1	Main Tube
140003	1	Tube Cap
140004	1	Tube Adapter
140005	1	End Plug
140006	1	Pushrod
140007	1	Needle Plug
140008	1	Needle Pullrod
140009B	1	Control Tube (Ames)
140010	1	Ball Outlet
140011	2	Band
140012	1	Control Slide
140013	2	Control Bushing
140014	1	Control Tube Cap
140015	1	Connector
Ⓓ 141016	1	Piston
140017	1	Pushrod Cap
140018	1	Spring
140019	1	Main Tube Cap
149020	1	AVM SE1000V45 Gas Spring
149021	1	Parker 4180E40702562 RL U-Cup
149022	1	Parker 4274E50400250 RL U-Cup

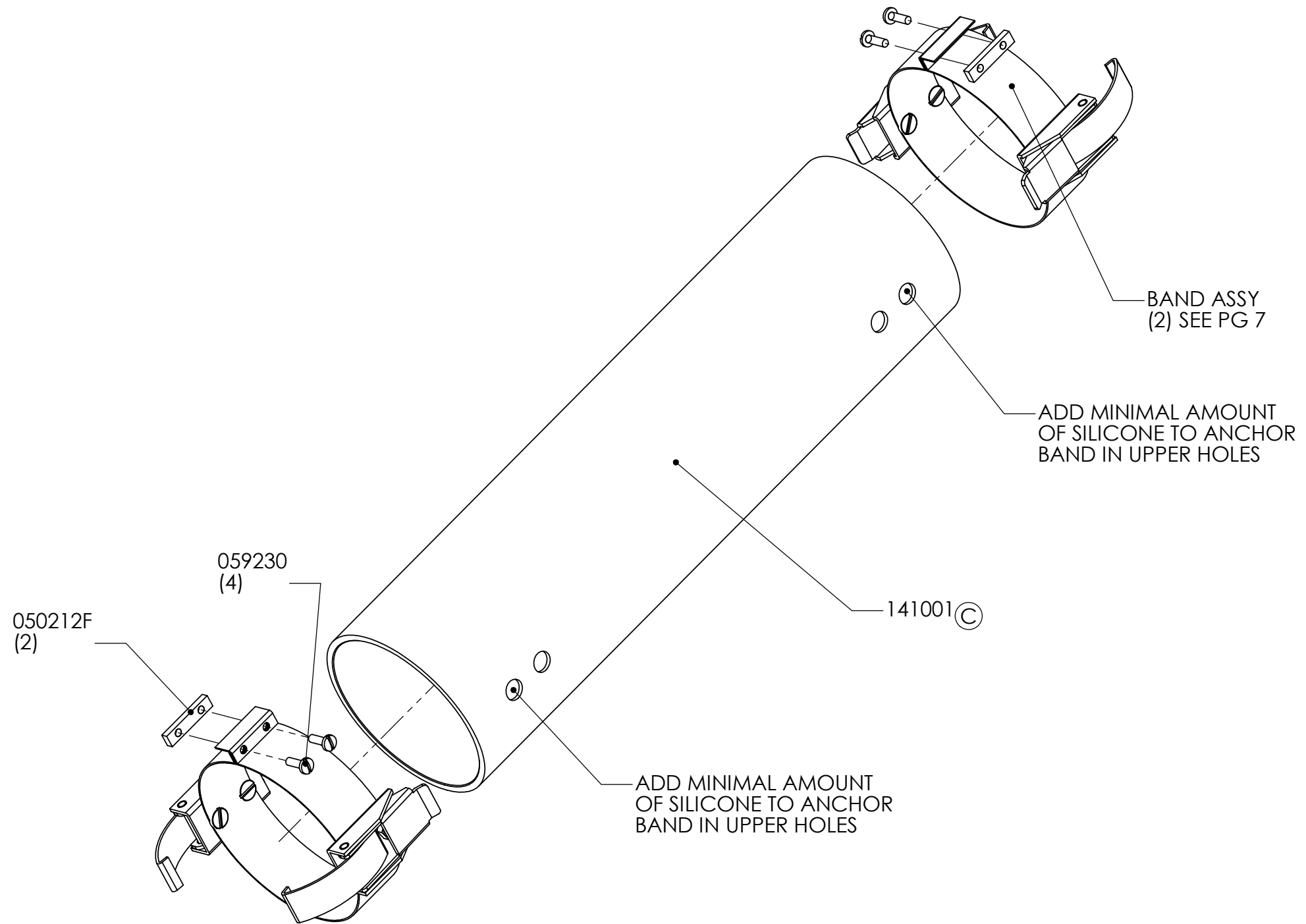
P/N	Qty.	Description
149023	1	Parker 4180E50400750 RL U-Cup
149024	1	M6 Stop Nut, SST
149025	2	Screw, 8-32 x 9/16, SST
149028	1	Bushing, Nylon, #6, McM-Carr 94639A102
149029	2	Washer, NAS 620C 1/4"L, SST
Ⓒ 149031	1	O-Ring, Buna, 2-318
Ⓒ 149032	1	O-Ring, Buna, 2-230
054064F	1	Filler Body Assy
724061F	4	Latch
Ⓒ 149033	8	Screw, 8-32 x 5/16, Modified
059260	8	Nut, 8-32, SST
809017	8	Lockwasher, #8, Medium Spring
059156	2	Screw, 4-40 x 5/16, Binding Head, SST
059107	3	Screw, 6-32 x 1/4, Socket Flat Head, SST
499023	2	Screw, 4-40 x 3/16, Flat Head, SST
499025	3	Screw, 6-32 x 1/2, Binding Head, SST
050212F	2	Lock Block
059230	4	Screw, 5-40 x 13/32, Binding Head, SST
210059	1	Shoulder Screw
Ⓒ 199010	1	Setscrew, 8-32 x 3/8
129061	2	E-Clip, 0.25 Shaft
Ⓓ 149034	1	Washer, Nylon, McM-Carr 90295A150
149035	1	Parker 4181860000250 Rod Wiper

	BY	DATE	MudRunner Final Assembly			
DRAWN	MWJ	06/01	 <b>an Axia Enterprise</b>			
CHECKED	HM	12/02				
ALL DIMENSIONS IN INCHES UNLESS OTHERWISE NOTED TOLERANCES UNLESS NOTED .XX ± 0.010"      ANGULAR ±.5° .XXX ± 0.005"			SIZE <b>B</b>	SCALE = 1:1	DWG. NO. <b>14TT</b>	REV. <b>D</b>
MATERIAL :			ASSEMBLY REF. NO.		SHEET 1 of 7	

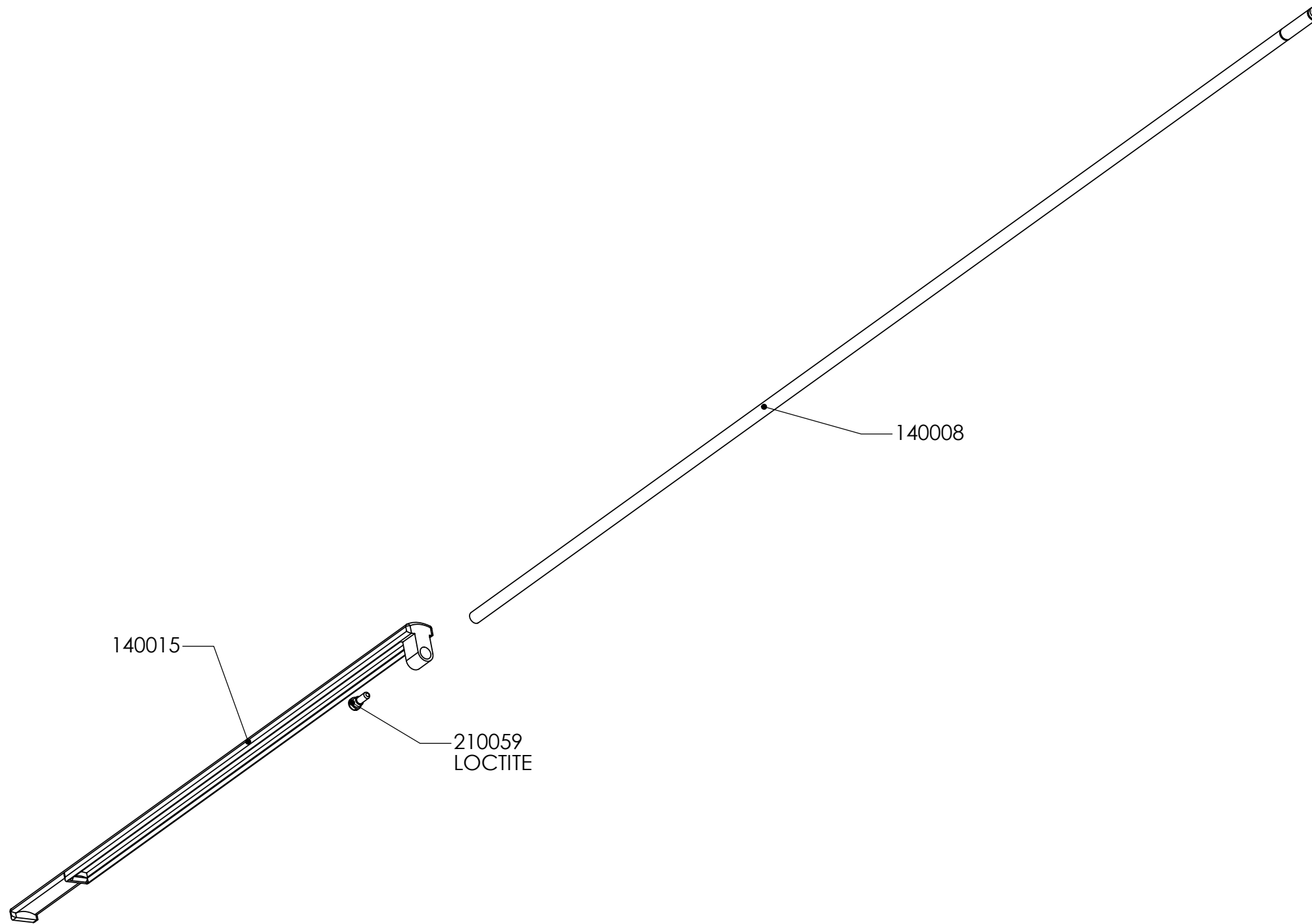




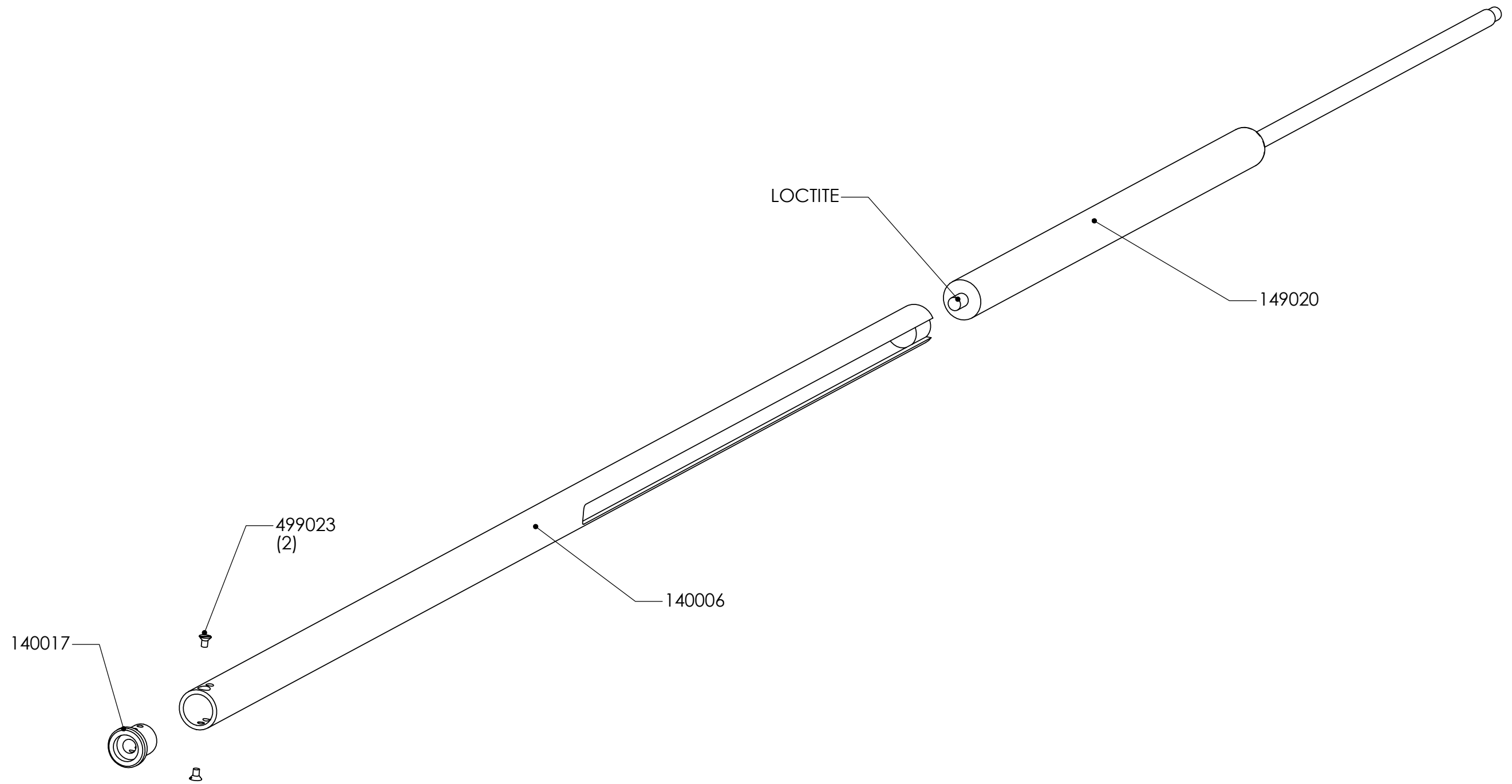
14	MudRunner Final Assembly	
	 <b>an Axia Enterprise</b>	REV. D



14	MudRunner Final Assembly	
	 <b>an <i>Axia</i> Enterprise</b>	REV. D



14	MudRunner Final Assembly	
	TopoTech <sup>®</sup> an <i>Axia</i> Enterprise	REV. D



140017

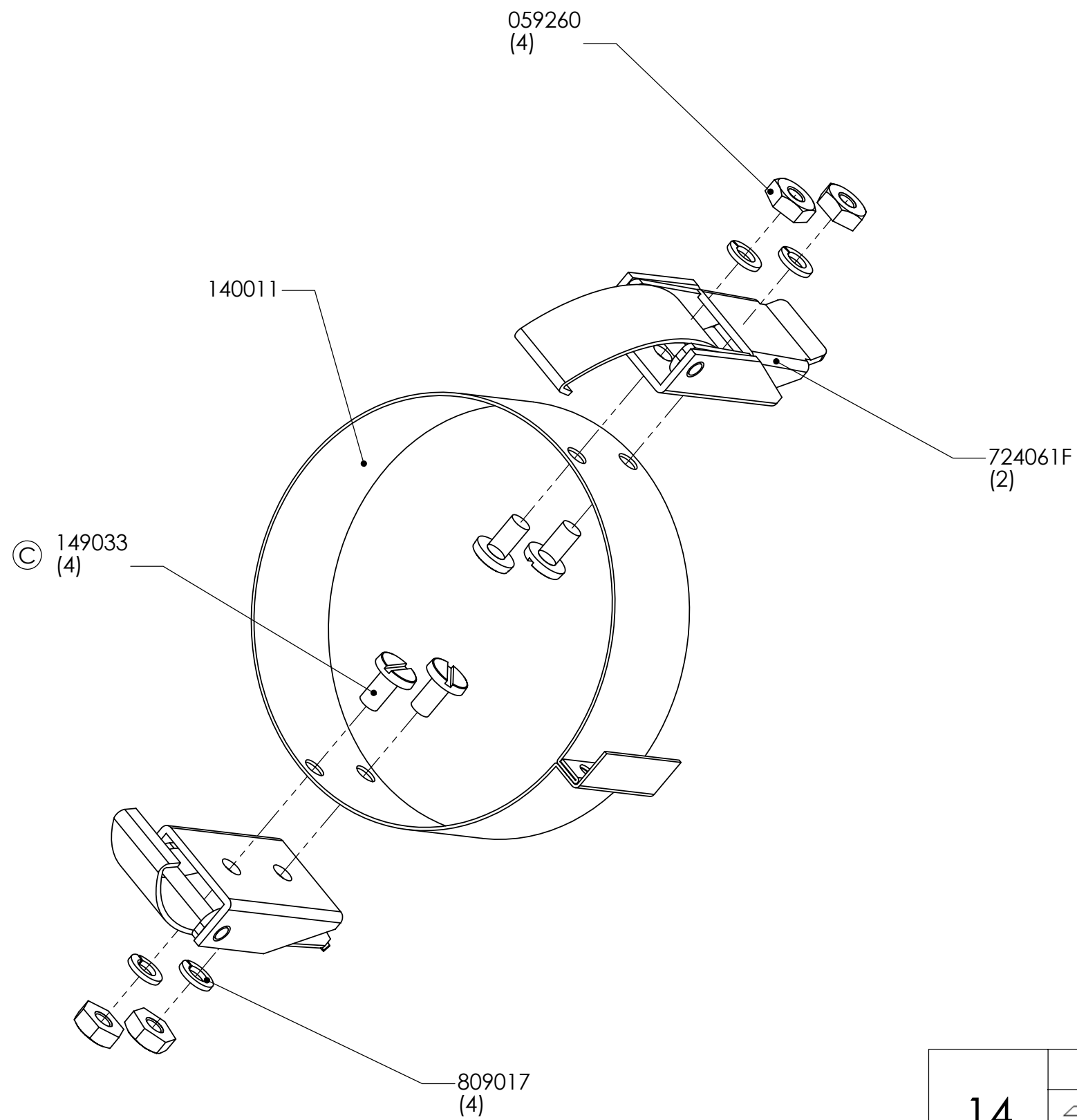
499023  
(2)

140006

LOCTITE

149020

14	MudRunner Final Assembly	
	TopoTech <sup>®</sup> an <i>Axia</i> Enterprise	REV. D



<b>14</b>	MudRunner Final Assembly	
	 <b>an Axia Enterprise</b>	REV. D