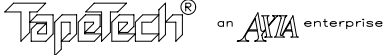
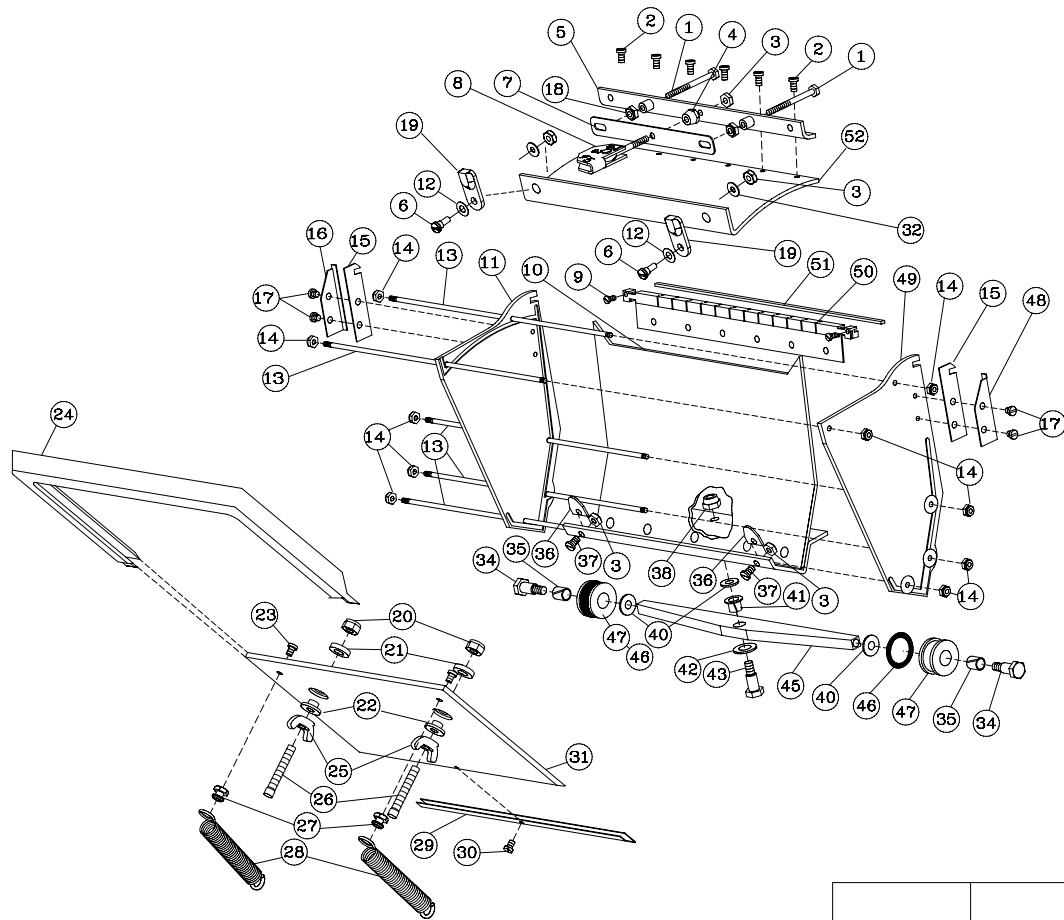


NOTE: THE FOLLOWING PARTS NOT SHOWN  
 ARE INCLUDED IN POLY BAG AS SPARES:  
 209039 QTY 1, 209006 QTY 1, 200001 QTY 1

REVISIONS				
ECN	REV	DESCRIPTION	DATE	BY
	D	UPDATE PER ECN's 937 and 975	11/99	HM
1012	E	REPLACE 330051 WITH 310051	02/00	HM
1040	F	CHANGE ITEMS AS SHOWN AND ADD LABEL	05/00	HM
1222	G	UPDATE DRAWING TO MATCH CURRENT BOM	09/01	HM
1344	H	CHANGE 202043 TO 339073	05/03	HM
1415	J	REPLACE (2) 059018 WITH (2) 209058	03/05	HM
1417,1419	K	REPLACE 059148 w/ 209148, 202010 w/ 203010	05/05	HM

Ref. No.	Part No.	Description	Qty.	Ref. No.	Part No.	Description	Qty.
01	202007	Push Rod	2	30	209048	Screw, 4-40 x 1/8 Bd. Hd. SST.	1
02	209016	Screw, 4-40 x 7/32 Bd. Hd. SST.	6	31	206027G	Pressure Plate	1
(G) 03	059018	Stopnut, 6-32, SST.	5	32	489023	# 6 Flat Washer	2
04	202021	Special Nut.	1	33			
05	204005	Clamp Assy.	1	34	200052F	Shoulder Screw	2
(D) 06	210059	6-32 Shoulder Screw	2	35	209148	Nyliner Bearing	2
(K) 07	203010	Crown Spring	1	36	209041	Spring Clip	2
08	206003	Dial Assy.	1	37	209049	Screw, 6-32 x 5/16 Bd. Hd. SST.	2
09	209012	Screw, 4-40 x 1/4 Fil. Hd. SST.	2	38	059225	LockNut, 10-32, Hex. SST.	1
10	204033G	Pivot Plate Assy.	1	39			
11	206025G	Right Side Plate	1	40	209042	Washer	3
(D) 12	219064	Spring Washer	2	41	209047	Nyliner Bearing, Flanged	1
(G) 13	200040F	Tie Rod	5	42	809006	Washer	1
14	609012	Nut, 4-40, SST.	10	43	202036	Shoulder Screw	1
15	202022	Repair Clip	2	44	123421	Label	1
16	209039	Skid Cover	1	45	200045G	Axle	1
17	059015	Screw, 6-32 x 1/4 Fil. Hd. SST.	4	46	219067	'O' Ring	2
(J) (D) 18	209058	6-32 BRASS NUT	2	47	310051F	Wheel	2
(D) (G) 19	210058F	Latch	2	48	209006	Skid Cover	1
20	209017	Nut, 10-24, SST.	2	49	202023G	Left Side Plate	1
21	209046	Washer	2	50	204002	Blade Holder Assy.	1
22	202028	Threaded Washer	2	51	200001	Blade	1
23	059012	Screw, 6-32 x 3/8 Fil. Hd. SST.	2	52	206032G	Radius Plate	1
(G) 24	200026F	Wiper	1				
25	209030	Wing Nut, 10-24	2				
(H) 26	339073	10-24 x 1 1/4 Sl. Fillister Hd. Sc.	2				
27	202020	Spring Anchor	2				
(G) 28	202044F	Pressure Plate Spring	2				
29	200009	Shim	1				

BY	DATE	7" Flat Box		
DRAWN	HM 11/99			
CHKD	HM 05/05			
APPVD		 ALL DIMENSIONS IN INCHES UNLESS OTHERWISE NOTED TOLERANCES UNLESS NOTED XX ± 0.010 XXX ± 0.005 ANGLES ± 1/2°		
MATERIAL				
SCALE	DWG NO.			
B	20TT	K		
ASSEMBLY REF. NO.		SHEET 1 of 2		



20	7" FLAT BOX	
		an  enterprise REV K