

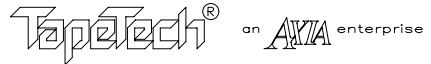
REVISIONS				
ECN	REV	DESCRIPTION	DATE	BY
	C	PRIOR ECNS 803, 1005	02/00	HM
1049	D	CHANGE 508009 TO 506009, ADD LABEL	05/00	HM
1184	E	364022 WAS 354022, ADD 156042, UPDATE w/F PNs	07/01	HM
1231	F	REMOVE HANDLE AND GRIP	10/01	HM
1245	G	REVERT TO REV E CONFIG. PER TT REQUEST	01/02	HM
1404	H	REPLACE 156042 WITH 151042	04/05	MWJ

Ref. No.	Part No.	Description	Qty.	Ref. No.	Part No.	Description	Qty.
01	506009	Cone	1	21	059051	Screw, 6-32 x 3/16 Fil Hd SST.	2
02	609012	LockNut, 4-40 SST.	5	22	350034	Pressure Plate	1
03	509010	Screw, 4-40 x 5/16 FL HD SST.	2	23	350008	Wiper	1
04	059156	Screw, 4-40 x 5/16 BD Hd SST.	3	24	123421	Label	1
05				25	552005F	Connector	1
06	059012	Screw, 6-32 x 3/8 Fil Hd. SST.	4	26	364022	Handle Assembly	1
07	359005	Screw, 6-32 x 1/4 Bd Hd. SST.	4	27	809011	Thumb Screw, 5/16-18 x 3/4	1
08	509008	Screw, 10-32 x 1/2 Bd Hd SST.	2	28	059061F	Valve Spring	1
09	350033F	Seal Holder	1	29	059084	Setscrew, 8-32 x 1/4 SST.	1
10	502019	Seal	1	30	609021	Screw, 10-32 x 5/8 Rd Hd SST.	1
11				31	559017	Screw, 1/4-20 x 5/8 Hex. SST.	2
12				32	609020	Friction Washer	1
13	352002F	Valve Holder	1	33	502034	Latch	1
14	059060	Stopnut, 3-48, Hex. Flex. Loc.	1	34	609018	Washer, Plastic	1
15	354003F	Filler Body Assy.	1	35	059225	Locknut, 10-32 SST.	1
16	050064F	Valve Stem	1	36	356001G	Housing Assy.	1
17				37	151042	Handle Grip, Black	1
18	502006	Pivot Bearing	2	38			
19	502007	Bearing, Nyliner	2	39			
20	502005F	Pivot	1	40			

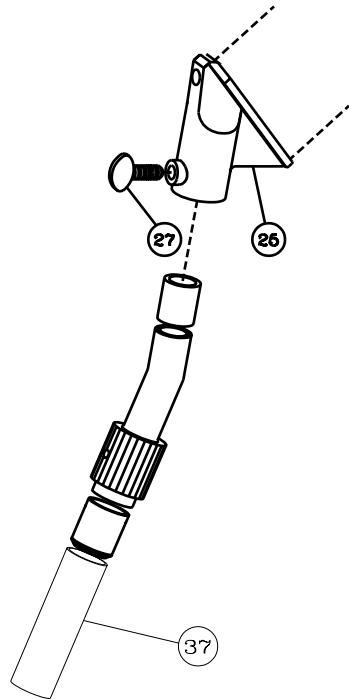
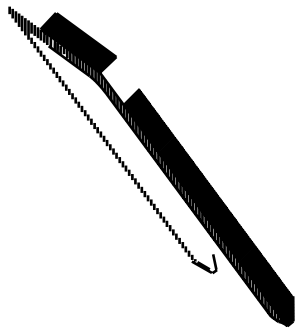
(E)  
 (E)(F)(G)  
 (E)  
 (E)(F)(G)(H)

	BY	DATE
DRAWN	HM	01/00
CHKD	MWJ	04/05
APPVD		
ALL DIMENSIONS IN INCHES UNLESS OTHERWISE NOTED TOLERANCES UNLESS NOTED XX ± 0.010 XXX ± 0.005 ANGLES ± 1/2°		
MATERIAL		

# 8" CORNER APPLICATOR



SIZE	SCALE	DWG NO.	REV
B		35 TT	H
ASSEMBLY REF. NO.			SHEET 1 of 2



10

35	8" CORNER APPLICATOR	
	TapeTech <sup>®</sup> on AKA enterprise	REV H