

NOTE: THE FOLLOWING PARTS NOT SHOWN
 ARE INCLUDED IN POLY BAGS AS SPARES,
 209039 QTY 1, 209006 QTY 1, 250001 QTY 1

REVISIONS

ECN	REV	DESCRIPTION	DATE	BY
878	C	ADD (2)239067,(2)330051. DEL(4)209053,(2)200051	11/97	MWJ
	D	UPDATE PER ECN'S 937 AND 975	11/99	HM
1012	E	REPLACE 330051 WITH 310051	02/00	HM
1043	F	CHANGE ITEMS AS SHOWN	05/00	HM
1223	G	UPDATE DRAWING TO MATCH CURRENT BOM	09/01	HM
1344	H	REPLACE 202043 WITH 339073	06/03	HM
1415	J	REPLACE (2) 059018 WITH (2) 209058	03/05	HM
1414,1419	K	REPLACE 059148 W/ 209148, 202010 W/ 203010	05/05	HM

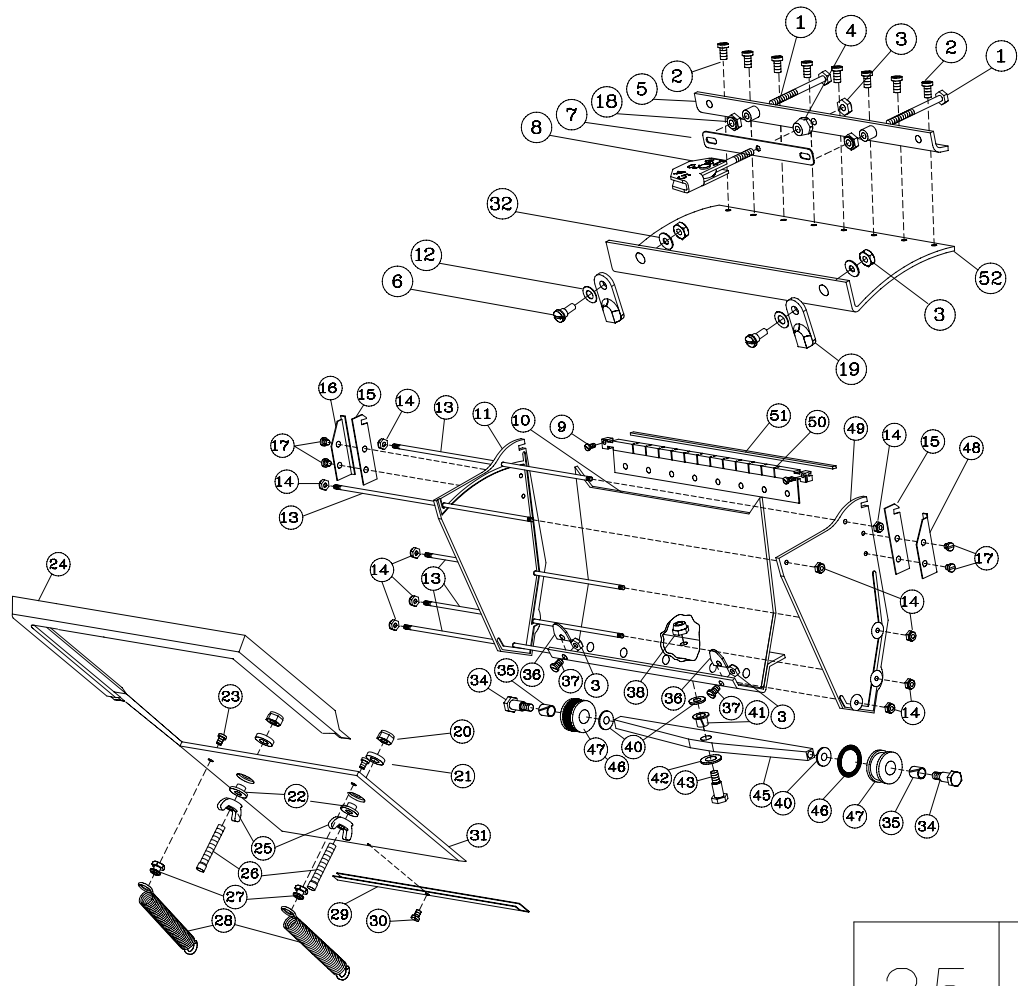
Ref. No.	Part No.	Description	Qty.	Ref. No.	Part No.	Description	Qty.	
	01	202007	Push Rod	2	30	209048	Screw, 4-40 x 1/8 Bd. Hd. SST.	1
	02	209016	Screw, 4-40 x 7/32 Bd. Hd. SST.	8	31	256027G	Pressure Plate	1
J	03	059018	Stopnut, 6-32, SST.	5	32	489023	# 6 Flat Washer	2
G	04	202021	Special Nut.	1	33			
	05	254005	Clamp Assy.	1	34	200052F	Shoulder Screw	2
D	06	210059	Shoulder Screw	2	35	209148	Nyliner Bearing	2
K	07	203010	Crown Spring	1	36	209041	Spring Clip	2
	08	206003	Dial Assy.	1	37	209049	Screw, 6-32 x 5/16 Bd. Hd. SST.	2
	09	209012	Screw, 4-40 x 1/4 Fil. Hd. SST.	2	38	059225	LockNut, 10-32, Hex. SST.	1
	10	254033G	Pivot Plate Assy.	1	39			
F	11	206025G	End Plate	1	40	209042	Washer	3
D	12	219064	Spring Washer	2	41	209047	Nyliner Bearing, Flanged	1
G	13	250040F	Tie Rod	5	42	809006	Washer	1
	14	609012	Nut, 4-40, SST.	10	43	202036	Shoulder Screw	1
	15	202022	Repair Clip	2	44	123421	Label	1
	16	209039	Skid Cover	1	45	250045G	Axle	1
	17	059015	Screw, 6-32 x 1/4 Fil. Hd. SST.	4	46	219067	'O' Ring	2
J	18	209058	6-32 Brass Nut	2	47	310051F	Wheel	2
D	19	210058F	Latch	2	48	209006	Skid Cover	1
G	20	209017	Nut, 10-24, SST.	2	49	202023G	End Plate	1
	21	209046	Washer	2	50	254002	Blade Holder Assy.	1
	22	202028	Threaded Washer	2	51	250001	Blade	1
G	23	059012	Screw, 6-32 x 3/8 Fil. Hd. SST.	2	52	256032G	Radius Plate	1
	24	250026F	Wiper	1				
	25	209030	Wing Nut, 10-24	2				
H	26	339073	10-24 x 1 1/4 SI Fillister Hd Sc	2				
	27	202020	Spring Anchor	2				
G	28	202044F	Pressure Plate Spring	2				
	29	250009	Shim	1				

	BY	DATE
DRAWN	MWJ	11/97
CHKD	HM	05/05
APPVD		
ALL DIMENSIONS IN INCHES UNLESS OTHERWISE NOTED		
TOLERANCES UNLESS NOTED		
XX ± 0.010		
XXX ± 0.005		
ANGLES ± 1/2'		
MATERIAL		

10" Flat Box

Top2Tech® an *AYA* enterprise

SIZE B	SCALE	DWG NO. 25TT	REV K
ASSEMBLY REF. NO.		SHEET 1 of 2	



25

10" FLAT BOX

TapeTech[®] an AYA enterprise

REV
K