



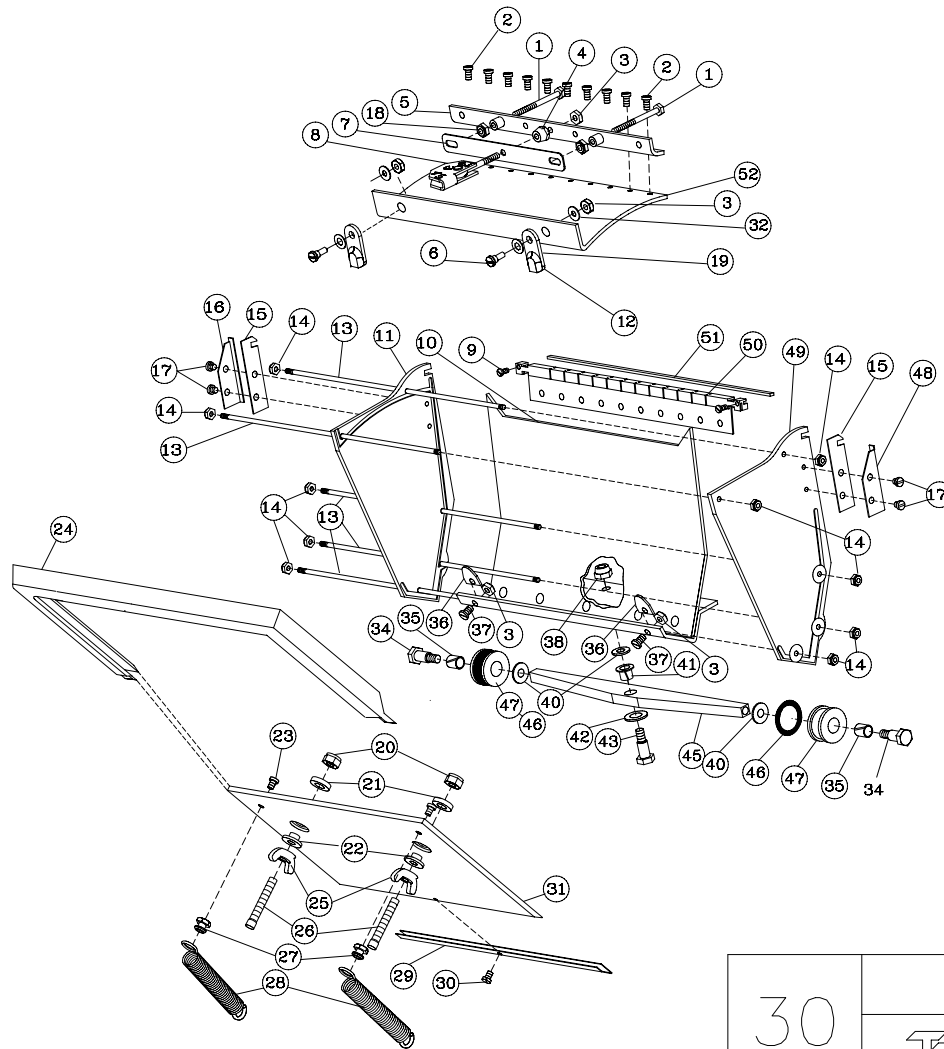
NOTE: 1 EACH OF THE FOLLOWING PARTS NOT SHOWN ARE INCLUDED IN POLY BAGS AS SPARES, 209006, 209039 AND 300001.


REVISIONS				
ECN	REV	DESCRIPTION	DATE	BY
878	C	ADD (2)239067,(2)330051. DEL. (4)209053,(2)200051	11/97	MWJ
	D	UPDATE PER ECN's 937 and 975	11/99	HM
1012	E	REPLACE 330051 WITH 310051	02/00	HM
1046	F	CHANGE ITEMS AS SHOWN	05/00	HM
1228	G	UPDATE DRAWING TO MATCH CURRENT BOM	10/01	HM
1344	H	REPLACE 202043 WITH 339073	06/03	HM
1415	J	REPLACE (2) 059018 WITH (2) 209058	03/05	HM
1417,1419	K	REPLACE 059148 W/ 209148, 300010 W/ 303010	05/05	HM

Ref. No.	Part No.	Description	Qty.	Ref. No.	Part No.	Description	Qty.
01	202007	Push Rod	2	30	209048	Screw, 4-40 x 1/8 Bd. Hd. SST.	1
02	209016	Screw, 4-40 x 7/32 Bd. Hd. SST.	10	31	306027G	Pressure Plate	1
(J)(G) 03	059018	Stopnut, 6-32, SST.	5	32	489023	# 6 Flat Washer	2
04	202021	Special Nut.	1				
05	304005	Clamp Assy.	1	34	200052F	Shoulder Screw	2
(G)(D) 06	210059	Shoulder Screw	2	35	209148	Nyliner Bearing	2
(K) 07	303010	Crown Spring	1	36	209041	Spring Clip	2
08	206003	Dial Assy.	1	37	209049	Screw, 6-32 x 5/16 Bd. Hd. SST.	2
09	209012	Screw, 4-40 x 1/4 Fil. Hd. SST.	2	38	059225	LockNut, 10-32, Hex. SST.	1
10	304033G	Pivot Plate Assy.	1	39			
(F) 11	206025G	End Plate	1	40	209042	Washer	3
(D) 12	219064	Spring Washer	2	41	209047	Nyliner Bearing, Flanged	1
(G) 13	300040F	Tie Rod	5	42	809006	Washer	1
14	609012	Nut, 4-40, SST.	10	43	202036	Shoulder Screw	1
15	202022	Repair Clip	2	44	123421	Label	1
16	209039	Skid Cover	1	45	300045G	Axle	1
17	059015	Screw, 6-32 x 1/4 Fil. Hd. SST.	4	46	219067	'O' Ring	2
(J)(D) 18	209058	6-32 Brass Nut	2	47	310051F	Wheel	2
(G)(D) 19	210058F	Latch	2	48	209006	Skid Cover	1
20	209017	Nut, 10-24, SST.	2	49	202023G	End Plate	1
21	209046	Washer	2	50	304002	Blade Holder Assy.	1
22	202028	Threaded Washer	2	51	300001	Blade	1
23	059012	Screw, 6-32 x 3/8 Fil. Hd. SST.	2	52	306032G	Radius Plate	1
(G) 24	300026F	Wiper	1				
25	209030	Wing Nut, 10-24	2				
(H) 26	339073	10-24 x 1 1/4 SI Fillister Hd Sc	2				
27	202020	Spring Anchor	2				
(G) 28	202044F	Pressure Plate Spring	2				
29	300009	Shim	1				

	BY	DATE
DRAWN	MWJ	11/97
CHKD	HM	05/05
APPRD		
ALL DIMENSIONS IN INCHES UNLESS OTHERWISE NOTED		
TOLERANCES UNLESS NOTED		
XX ± 0.010		
XXX ± 0.005		
ANGLES ± 1/2°		
MATERIAL		

12" Flat Box			
 an  enterprise			
SIZE	SCALE	DWG NO.	REV
B		30TT	K
ASSEMBLY REF. NO.			SHEET 1 of 2



30	12" FLAT BOX	
		an <i>AYA</i> enterprise
	REV	K